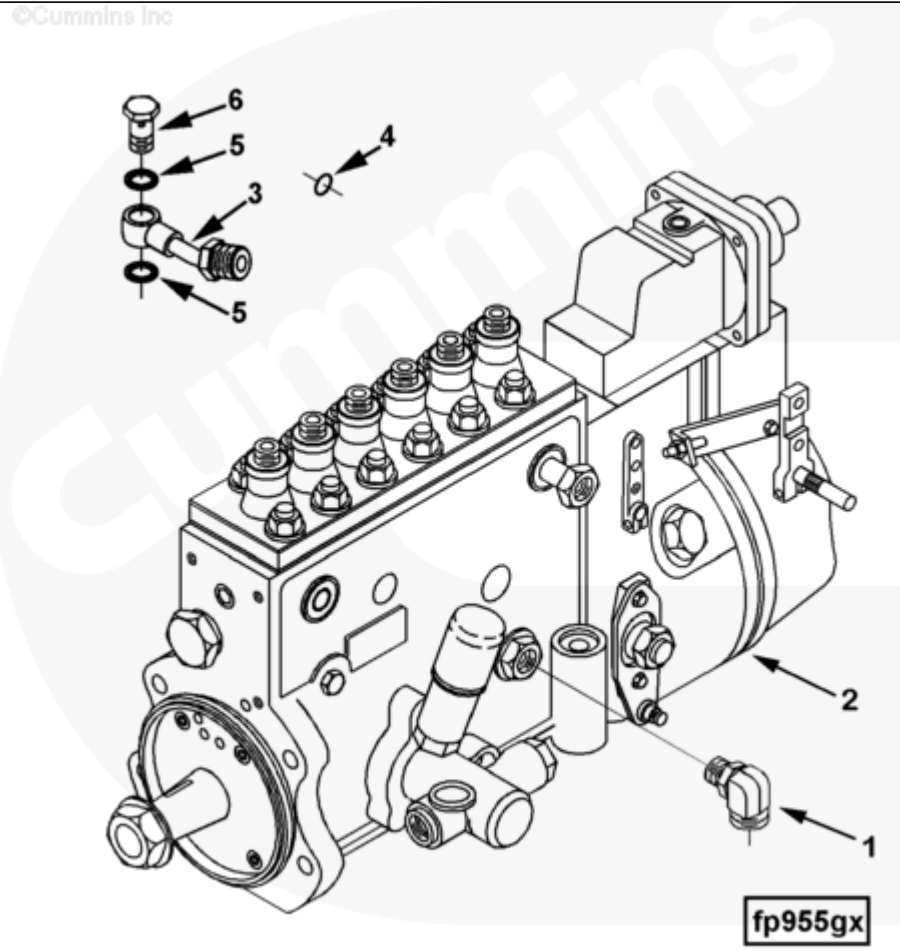




Parts Catalog - Option Detail

Electronic Parts Catalog - Option Detail				
Option	Group	Graphic	Film Card	Date
FP97993-05	05.21	fp955gx	Z	27-FEB-99
Engines	6C8.3, C GAS PLUS CM556, G8.3, G8.3 CM558, GTA8.3 CM558, ISC CM2150, ISC CM554, ISC CM850, ISC8.3 CM2250, ISC8.3 G CM2180 C101, ISL CM2150, ISL CM554, ISL CM850, ISL G CM2180, ISL8.9 CM2150 L110, ISL8.9 CM2880 L112, ISL9 CM2150 SN, ISL9 CM2250, ISL9 CM2350 L101, ISL9 CM2350 L111, ISLE4 CM850, L GAS PLUS CM556, L8.9, L8.9 L121, L8.9G CMOH2.0 L125B, L9 CM2350 L116B, L9 CM2350 L119B, L9 CM2350 L120C, L9 CM2350 L123B, L9.3 L105, L9.5 L117, L9N CM2380 L124B, QSC8.3 CM2250, QSC8.3 CM2880 C102, QSC8.3 CM554, QSC8.3 CM850(CM2850), QSL9 CM2250, QSL9 CM2250 L115, QSL9 CM2350 L102, QSL9 CM2350 L107, QSL9 CM2350 L118, QSL9 CM2350 L122, QSL9 CM554, QSL9 CM850(CM2850), QSL9 G CM558, QSL9 M CM2250 L106, QSL9.3 CM2880 L113			



[SMALL](#) | [MEDIUM](#) | [LARGE](#)

Cart	Ref No	Part Number	Part Description	Required	Remarks
View My Cart					
		FP97993-05	Base Fuel Pump		

				Engine Family: "C" Series
				Engine Cylinders: 6
				Advertised Metric HP: 450 at
				2600
				Peak torque (LB-FT): 1050 at
				2000
				Fuel Pump Type: Inline
				Pump Manufacturer/Model:
				Bosch p7100
				Governor Type: RQVK
				Solenoid Mounting Location:
				Pump
				High Pressure Tube ID (mm):
				2.0
				Shutdown Device: Electrical
				Direct Link
				LDA provision: Yes
				Compatible Fuel Rating - FR:
				90215
				CPL: 2172
				Certified By: EPA, LR
				Peak Power: 433
				Certification Level: Nox
				Requirements Of The
				International Maritime
				Organization (IMO) Marpol
				73/78 Annex VI Regulation 13.
				Peak Power: 321 KW (430 BHP)
				@ 2600
				Governor Break RPM: 2675

					Governor Regulation: 13%
					High Idle RPM: 2950
					Low Idle RPM: 600
					Note 1:
					Advertised metric horsepower
					rating is per ISO 3046 with
					25 degree centigrade fuel.
					Note 2: The above peak power
					is per ISO 8665 with 40
					degree centigrade fuel.
<input type="checkbox"/>	1	3866217	Male Adapter Elbow	1	
<input type="checkbox"/>	2	4019576	Fuel Injection Pump	1	
<input type="checkbox"/>	3	3393989	Fuel Supply Tube	1	
<input type="checkbox"/>	4	3627695	O-Ring Seal	1	
<input type="checkbox"/>	5	3935172	Sealing Washer	2	
<input type="checkbox"/>	6	3924725	Banjo Connector Screw	1	M14 X 1.50 X 26.